



Module 1 – Lesson 2

Right of Way Concepts

The following information is a review of the lesson you just completed. Take time to review and study this information. Remember, this important information will be needed to pass your upcoming assessment, so take the necessary time in order to feel secure about your knowledge of this segment. This is not a graded portion of the course, but should be completed as an additional exercise.

Topic 1 - Situations When You Must Yield

“Yield Right-of-Way” – Letting others go first. Remember, right-of-way is a privilege that comes from other drivers. Often times yielding to another driver prevents accidents, other times it is just an act of courtesy. There are many instances that yielding the

Right-of-Way is the law.

Remember the following points to yield situations:

1. Your action should not cause those to whom you should yield the right-of-way to slow or stop.
2. Traffic signs and signals only show who should yield the right-of-way. They do not stop traffic for you.
3. Others can give you the right-of-way. Never assume others will always yield to you.
4. A safe action is to yield the right-of-way even when the law requires the other driver to yield.
5. Failure to yield the right-of-way is one of the most frequent violations in fatal collisions.

Topic 2 - Intersections

- **Intersections controlled by signs and signals.** When signs and signals control traffic at an intersection, obey them. Know the meaning of these signs and signals.
- **Single or two-lane road intersecting with multiple-lane road.** When driving on a single or two-lane road you must yield to: (1) vehicles traveling on a divided street or roadway, or (2) vehicles traveling on a roadway with three or more lanes.
- **Unpaved road intersection with a paved road.** If you are driving on an unpaved road, which intersects with a paved road, you must yield the right-of-way to vehicles traveling on the paved road.
- **Intersections not controlled by signs and signals, multiple lanes, or pavement.** When approaching an intersection of this type, you should yield the right-of-way to any vehicle that has entered the intersection on your right or is approaching the intersection on your right. If the road to your right is clear, or if approaching vehicles are far enough from the intersection to make your crossing safe, you may proceed. Since there are no traffic controls at this intersection, make sure that there are no approaching vehicles from the left. You may legally have the right-of-way, but you should be sure the other driver yields to you before you proceed.
- **Turning left.** When turning left you must yield the right-of-way to any vehicles coming straight through from the other direction.
- **Private roads and driveways.** When entering or crossing a road, street, or highway from a private road, alley, building, or driveway after stopping prior to the sidewalk, you shall yield the right-of-way of all approaching vehicles and pedestrians.
- **T-Intersections.** When approaching an intersection of a through street that ends at the intersection, first you must stop and then yield the right-of-way to the vehicles on the through street.
- **Railroad grade crossings.** Texas law requires obedience to a signal indicating approach of a train. Whenever any person driving a vehicle approaches a railroad grade crossing, the driver of such vehicle shall stop within fifty- (50) feet but not less than fifteen (15) feet from the nearest rail of such railroad.

Topic 3 - Merge Areas

The **Merging Area** is the third part of an expressway entrance. The first two parts are the entrance ramp and the acceleration lane. Try to enter the expressway from the merging area at about the same speed as the cars in the first lane. Once on the expressway, adjust your speed to the flow of traffic as soon as possible.

There are certain steps to take when entering an expressway.

1. Be sure the entrance is the one you want and that the ramp is an entrance ramp. Look for a WRONG WAY or DO NOT ENTER SIGN.
2. Once on the entrance ramp, be alert for vehicles ahead and behind. Take quick glances through your left outside rearview mirror and over your left shoulder to find a gap in traffic that your car will fit into safely. Signal your intention to merge well in advance.
3. Once in the acceleration lane, adjust your speed to the flow of the traffic. Continue to glance quickly in the mirror and over your shoulder to decide the time and place to enter a gap.
4. Before entering the merging area, decide which vehicle to follow in the traffic flow. As you enter the merging area, adjust your speed to match the traffic flow. Position your car at a safe interval behind the car you plan to follow. Merge smoothly.
5. Once in traffic, cancel your turn signal and adjust to the speed of traffic. Keep a safe space cushion around your car.

Entering or leaving controlled-access highway. The driver of a vehicle proceeding on an access or feeder road (frontage road) of a controlled-access highway shall yield the right-of-way to a vehicle entering or about to enter the road from the highway or leaving or about to leave the road to enter the highway.

Driving on multiple-lane roadways. On a roadway divided into three (3) or more lanes providing for one-way movement, a vehicle entering a lane of traffic from a lane to the right shall yield the right-of-way to a vehicle entering the same lane of traffic from a lane to the left.

Topic 4 - Special Situations

- **Give the Right-of-Way to Emergency Vehicles.** You must yield the right-of-way to police cars, fire trucks, ambulances, and other emergency vehicles that are sounding a siren or bell or flashing a red light by pulling to the right edge of the roadway and stopping. In the event traffic is so congested as to prevent you from safely doing so, slow down and leave a clear path for the emergency vehicle.

- **Give the Right-of-Way to School Buses.** Drive with care when you are near a school bus. If you approach a school bus from either direction and the bus is displaying alternately flashing red lights, you must stop and not pass until (1) the school bus has resumed motion, or (2) you are signaled by the driver to proceed, or (3) the red lights are no longer flashing.
- **Yield the Right-of-Way to Pedestrians.** Don't make your car into a deadly weapon. You should always be on the lookout for people on foot whether or not they have the right-of-way. Drivers must stop.

Here are some important points to remember when dealing with yielding situations:

1. Yield at stop signs to pedestrians in or near the crosswalk, and all traffic on the through street.
2. Yield at fresh green lights to pedestrians still in the crosswalk and vehicles still in the intersection
3. Yield to any blind person carry a white cane or accompanied by a guide dog.
4. Yield coming from an alley, driveway or private roadway to pedestrians before reaching the sidewalk and all vehicles on the street.
5. Yield to all YIELD signs to all pedestrians in or near crosswalks and all vehicles on the cross street.
6. Yield to emergency vehicles sound a siren or using a flashing light and stop clear of the intersection close to curb. Also, wait for emergency vehicles to pass.
7. Yield when turning left at any intersection to all pedestrians in your turn path and all oncoming vehicles that are at all close.
8. Yield at four-way stops to all pedestrians in or near crosswalks, vehicles that arrive first, and a vehicle from the right if you arrive at the same time.
9. Yield at uncontrolled intersections to pedestrians in or near the crosswalk, any vehicle that has entered the intersection, oncoming traffic when you turn left and a vehicle from the right if you both arrive at the same time.

Topic 5 - Highway-Rail Grade Crossings

- **If a railroad crossing is marked only with a cross-buck sign** - reduce speed, look both ways, and listen for audible signal (whistle).
- **If a train is approaching** - STOP; if not, proceed only upon exercising due care.
- **If red lights are flashing at a railroad crossing** - STOP. If a train is approaching, remain stopped until the train passes by and the lights stop flashing.
- **If railroad-crossing arms have been lowered** - STOP. You must wait until the train has passed and the gates are raised.
- **Never stop on tracks.** If your car stalls on the tracks and you cannot restart it, get out and try to push it off the tracks. If you cannot push it off the tracks, get help. If a train is approaching and your vehicle is stalled, get out quickly and get clear of the tracks. Run in the direction from which the train is approaching to avoid flying debris, staying clear of the tracks.
- **Be sure all tracks are clear before you proceed across.** There may be two or more sets of tracks. One train could be blocking the view of another.
- **Trains do not and cannot stop at crossings** - They always have the right-of-way. Audible signals or whistle may be difficult to hear when approaching railroad crossings. It is suggested that you roll your window down, turn your radio down, and listen carefully.



Module 1 – Lesson 3 Traffic Control Devices

The following information is a review of the lesson you just completed. Take time to review and study this information. Remember, this important information will be needed to pass your upcoming assessment, so take the necessary time in order to feel secure about your knowledge of this segment. This is not a graded portion of the course, but should be completed as an additional exercise.

Topic 1 - Traffic Signals

Traffic signals help provide for the orderly movement of traffic. Drivers must obey these signals except when an officer is directing traffic. You must obey a traffic officer at all times even if he is telling you to do something that is ordinarily considered against the law.

Steady Red Light - Stop before entering the crosswalk or intersection.

Steady Yellow Light - Caution—red light coming up! You must STOP before entering the nearest crosswalk at the intersection.

Steady Green Light - Go if it is safe to do so.

A Green Arrow - Showing at the same time as a Red Light - Proceed carefully in the direction of the arrow after yielding the right-of-way to other vehicles and pedestrians.

A Flashing Red Light - Stop completely before entering the crosswalk or intersection, then proceed when you can do so safely.

A Flashing Yellow Light - Caution—Slow down and proceed with caution. You may turn left on a light that is green. **However**, you must yield the right-of-way if other traffic is approaching from the opposite direction.

Topic 2 - Traffic Signs

Traffic signs can help you to be a better driver. They help you in the following ways:

WARN of hazards ahead that would otherwise be difficult to see.

GUIDE drivers to their destination by identifying the route.

INFORM of local regulations and practices.









REGULATE the speed and movement of traffic.

Colors

Signs may be better learned by color and shape. We will first learn the meaning of color.

Red – Stop or Prohibition	Green – Indicated Movements permitted direction Guidance	Blue – Motorist Service Guidance	Yellow – General Warning
Black – Regulation	White – Regulation	Orange – Construction and Maintenance Warning	Brown – Public Recreation and Scenic Guidance

Shapes

 OCTAGON: Exclusively for Stop signs.	 HORIZONTAL RECTANGLE: Generally for guide signs.
 EQUILATERAL TRIANGLE: Exclusively for Yield signs.	 PENNANT: Advance warning of No Passing Zones.
 DIAMOND: Exclusively to warn of existing or possible hazards on roadways or adjacent areas.	 VERTICAL RECTANGLE: Generally for regulatory signs.
 PENTAGON: School advance and school crossing signs.	 ROUND: Railroad advance warning signs.

Railroad Warning Signs

- **Railroad Crossing.** You are within a few hundred feet of a railroad crossing. You should slow down and be prepared to stop. If you see a train coming—STOP—never try to beat it.
- **Railroad Cross-buck signs** are posted at every railroad, highway, road, or street grade crossing and show the location. If more than one track is to be crossing, it will show the number of tracks. Always slow, look, listen, and be prepared to yield the right-of-way to an approaching train.
- **Gate and Flashing Light.** Stop when the lights begin to flash before the gate lowers across your side of the road. Remain stopped until the gates are raised and the lights stop flashing.

Construction and Maintenance Signs:

Construction and maintenance signs are used to notify drivers of unusual or potentially dangerous conditions in or near work areas. Most signs in work areas are diamond shaped. A few signs are rectangular.

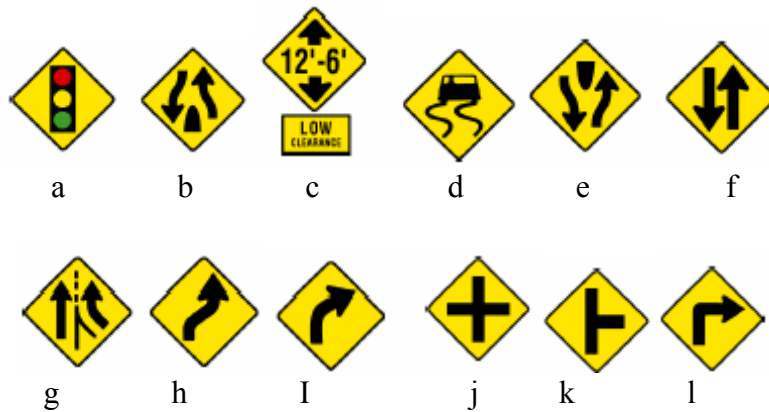
Sign Definitions

- **“STOP”** A red stop sign with white letters or a yellow sign with black letters. Stop before the crosswalk or intersection. Do not block the pedestrian crosswalk. A stop sign means that **you must bring your car to a complete stop**. Slowing down is not enough. If you stop behind other stopped vehicles, you must make another stop at a clearly marked line or before entering the intersection if a stop line is not present.
- The **“4-WAY”** or **“ALL WAY”** sign added to a stop sign advised that all approaching traffic to this intersection must stop.
- **“YIELD”** This sign tells you that the road you are on joins with another road ahead. You should slow down or stop if necessary so that you can yield the right-of-way to vehicles on the other road.
- **“SCHOOL ZONE”** The speed shown is in effect when the yellow light is flashing. Be extremely careful for school children.

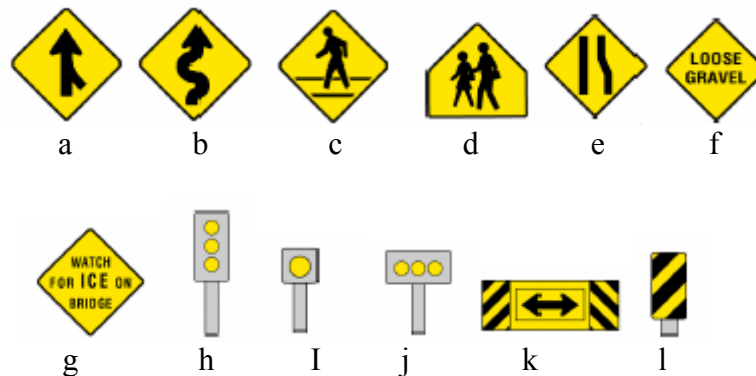
Warning Signs

Warning signs alert drivers to conditions which lie immediately ahead and tell them what to look for. There may be road hazards, changes in direction or some other situation that you should know about. Not only must warning signs be observed for the sake of safety, but to disregard them may be a traffic violation. Click on a sign to read more about that sign.

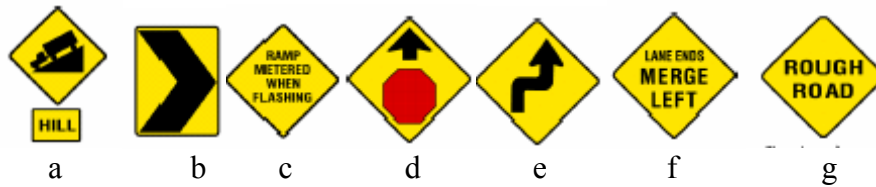
- a. Warns of a traffic control signal ahead.
- b. The divided highway on which you are traveling ends ahead. Be careful as you approach the point where two-way traffic begins again.
- c. Height of underpass from road surface is shown. Do not try to enter if your load is higher than the figure shown on the sign.
- d. Slow down on wet road. Do not suddenly turn, speed up, or stop.
- e. Advises that you are approaching a section of highway where the opposing flows of traffic are separated by a median island.
- f. You should drive in the right-hand lane and expect oncoming traffic in the left-hand lane.
- g. You are approaching a point where two roadways come together, but you are not required to merge as additional lane begins. Watch for traffic in the new lane.
- h. The road curves one way (right) and then the other way (left). Slow down, keep right and do not pass.
- i. Road ahead makes a gradual curve in the direction of the arrow (right). Slow down, keep right and do not pass.
- j. Crossroad ahead. Slow down, look carefully in all directions.
- k. Another road enters the road you are traveling on from the direction shown. Watch for traffic from that direction.
- l. Road ahead makes a sharp turn in the direction of the arrow (right). Slow down, keep right and do not pass.



- a. You are approaching a point where other traffic lanes come together with the one you are on. Watch for traffic from that direction
- b. There is a winding road ahead. Drive slowly and carefully and do not pass.
- c. Pedestrian Crossing. You are near an area where a large number of pedestrians cross the street. Slow down and watch for people crossing the street on foot.
- d. You are near a school. Slow down, and prepare to stop suddenly if necessary. Watch for children.
- e. Gives advance notice of a reduction in the number of lanes of pavement ahead.
- f. The surface of the road is covered with loose gravel. Go slow enough to keep complete control of your vehicle. Do not apply brakes suddenly or make sharp turns.
- g. Warns of a hazardous condition on bridge caused by ice. This sign will be displayed continuously during wintertime periods. Drivers should slow down and avoid applying their brakes if icy conditions exist.
- h. Mounted in front of an obstruction which is close to the edge of the road, such as culverts, or center piers on divided highways.
- i. Used to indicate the alignment of the road as an aid to night driving.
- j. Mounted immediately in front of an obstruction, or at short changes in road alignment.
- k. You are approaching a “T” Intersection and must turn left or right. Be prepared to yield the right-of-way at the intersection if necessary.
- l. This sign is used to mark the ends of the side rails of narrow bridges and other obstructions so that they may be easily seen.



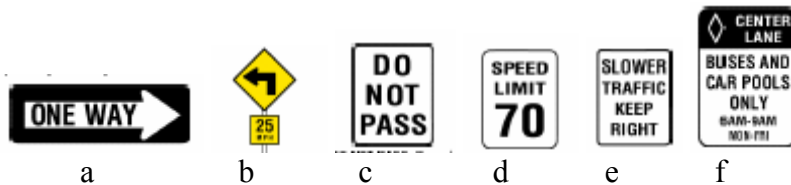
- a. You are approaching a downgrade; **all** drivers approach with caution. It may be necessary to use a lower gear to slow your vehicle.
- b. The road ahead curves sharply. Slow down, keep right, and do not pass.
- c. This sign will have yellow lights flashing (top and bottom) when the freeway ramp ahead is metered. The ramp meter (red or green) directs motorists when to enter the freeway.
- d. Be prepared for a stop sign ahead.
- e. The road ahead makes a sharp turn to the right and then a sharp turn to the left. Slow down, keep right and do not pass.
- f. The lane ends ahead. If you are driving in the right lane, you should merge into the left lane.
- g. Slow down, the road surface ahead is in poor condition.



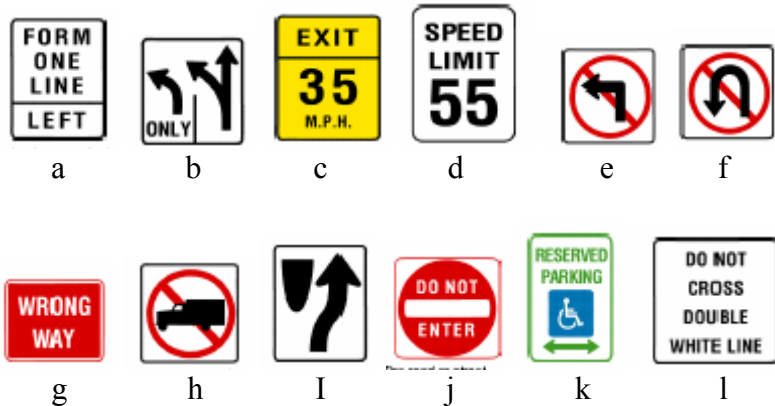
Regulatory and Warning Signs

Regulatory signs tell us what we must do. Drivers are required to obey them in the same manner as traffic laws. These signs are one way to help protect your safety.

- a. **ONE WAY:** If you wish to turn at an intersection where this sign is posted, do so only in the direction indicated by the arrow.
- b. **ADVISORY SPEED SIGN:** This sign gives the highest speed that you can safely travel around the turn ahead.
- c. **DO NOT PASS:** Do not pass other vehicles.
- d. **SPEED LIMIT:** This sign tells you the maximum speed (in miles per hour) you are permitted to travel.
- e. **SLOWER TRAFFIC KEEP RIGHT:** Stay in the right-hand lane if you are driving slower than other vehicles on the roadway.
- f. **HIGH OCCUPANCY VEHICLE (HOV) PREFERENTIAL LANE:** Buses and vehicles used for carpools may use this lane only between the hours of 6 a.m. to 9 a.m. Monday through Friday.
- g. **DO NOT CROSS YELLOW LINES:** The distance you can see ahead is limited and passing another vehicle is so hazardous that you may not pass.
- h. Vehicles driving in the right lane must turn right at the next intersection unless the sign indicates a different turning point.
- i. This sign marks a place where you may cross over to the other side of the divided highway.
- j. A green signal will indicate when you may turn left.
- k. Reminds drivers that the shoulder of the road should be used only by vehicles required to stop because of mechanical breakdown, tire trouble, lack of fuel or other emergencies.
- l. The road ahead is not open to any traffic. Look for detour or other route.

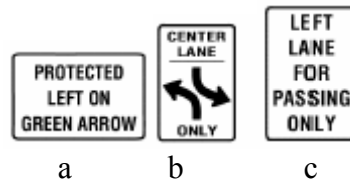


- a. Instructs drivers that all traffic on the same roadway must merge into one lane.
- b. This sign indicates that two lanes of traffic are permitted to turn left. The traffic in the left lane must turn left, traffic in the other lane has a choice.
- c. Indicates the speed at which the exit ramp from a freeway or expressway may be traveled safely.
- d. Indicates the maximum speeds permitted on the roadway for daytime and nighttime.
- e. Turning left at an intersection where this sign is posted is prohibited.
- f. Making a U Turn at an intersection where this sign is posted is prohibited.
- g. If you see this sign facing you, you are driving the wrong way on a one-way street, and you are directly opposing the flow of traffic.
- h. Trucks are prohibited from using or entering the street or roadway where this sign is displayed.
- i. Drive to the right of this sign. This sign is used in advance of islands and medians.
- j. The road or street ahead is for one-way traffic traveling in the opposite direction. You must not drive into it in the direction you are going.
- k. Do not park, stop, or stand your vehicle in a parking space reserved for disabled persons unless your vehicle has a disabled license plate or windshield identification card.
- l. Driver should not change lanes or turn across the double white lines.



Oncoming traffic must stop for vehicles turning at an intersection. Vehicles turning at a protected light should use caution.

- a. The center lane of a highway is reserved for the exclusive use of vehicles turning left in either direction and not used for passing or overtaking. The only time a vehicle should enter the center lane is at a point where the vehicle will have time to slow down or stop in order to make a safe left turn maneuver. The center lane should never be used for passing or as a through traffic lane.
- b. On highways with more than one lane with vehicles traveling in the same direction and this sign is present, slower traffic should travel in a lane other than the farthest left lane. The farthest left lane is for “passing vehicles only”.

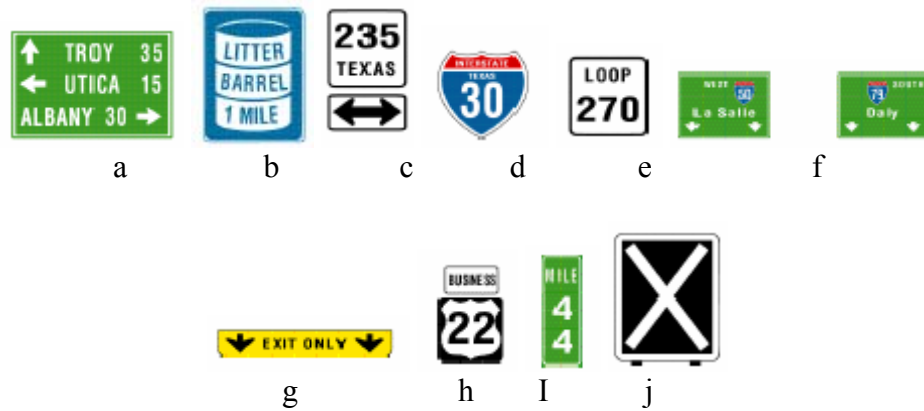


Guide Signs

Guide signs are especially helpful when you are not in your home area. They tell you what road you are on and how to get where you wish to go. They furnish information that makes the trip more pleasant and interesting. This page shows only a few examples of many such guide signs.

- a. **Travel Information:** This sign not only tells you which way to go but also how far you must travel.
- b. **Litter Barrel:** The only place where you may lawfully throw your litter on the highway is in a litter barrel. This sign advises that such a barrel is one mile ahead. Litter barrels are also found at all rest and picnic areas.
- c. **Texas Route Marker** - These signs tell you what road you are on. Plan your trip and know which roads you wish to take.
- d. **Interstate Route Marker** – These signs tell you what interstate highway you are on.
- e. A short state highway in a city or urban area.
- f. These signs are usually mounted above the roadway. The arrows indicate the lane or lanes to be used to follow a particular highway route.
- g. The lane that has this sign above it exits ahead.
- h. Indicates an officially designated highway that branches off the regularly numbered highway and goes through the business portion of the city.
- i. MILEPOSTS PROVIDE A MEANS OF IDENTIFYING THE LOCATION OF ACCIDENTS, BREAKDOWNS, OR OTHER EMERGENCIES. Erected every mile on Interstate highway starting at state line.
- j. Lane-use control signals are special overhead signals that indicate whether a motorist should or should not drive in a specific lane. If a red X appears above a lane, a driver should not drive in that lane. A steady yellow X means that a driver

should prepare to vacate, in a safe manner, the lane over which the signal is located because a lane control change is being made. A steady downward green arrow means that a driver is permitted to drive in the lane over which the arrow signal is located. These type signals can be used on streets, highways, or freeways.



Topic 3 – Pavement Markings

Channelizing Devices:

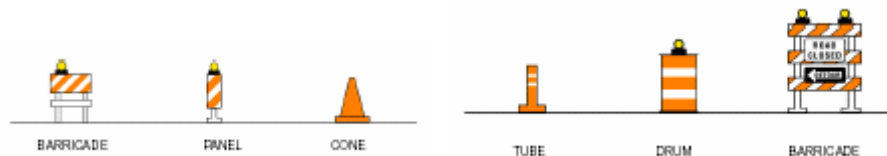
Barricades, vertical panels, drums, cones and tubes are the most commonly used devices to alert drivers of unusual or potentially dangerous conditions in highway and street work areas and to guide drivers safely through the work zone. At night they are often equipped with flashing or steady burn lights.

Advance Warning Signs

- Pay attention.
- Follow instructions.
- Reduce speed to at least the posted construction zone speed signs.

Work Areas

- Further reduce speed as you approach workers and equipment.
- Be prepared for unexpected movements of workers and equipment.



The diagonal stripes on the barricade or vertical panel guide the driver towards the direction to which the traffic is to pass. Stripes sloping downward to the right mean the driver should bear to the right. Conversely, stripes sloping downward to the left mean bear to the left.

Color Orange = Work Zone = Danger

- Traffic control devices are used to direct motorists and pedestrians safely through work zones and to protect workers.
- Be prepared to slow or stop.
- Be prepared to change lanes.
- Be prepared for the unexpected.



Flashing Arrow Panels:

Large flashing or sequencing arrow panels may be used in work zones both day and night to guide drivers into certain traffic lanes and to inform them that part of the road or street ahead of them is closed.

Lane Change Signs.

- Slow and prepare to change lanes when safe.
- Be prepared for drivers who wait until the last second to move to the open lane.
- Maintain reduced speed until you clear the construction area. There should be a sign indicating that you are leaving the construction area.
- Return to normal driving lane only after checking traffic behind you.

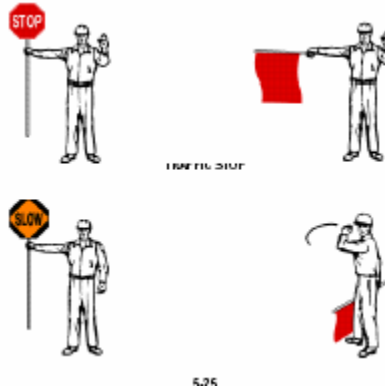


FLAGPERSONS:

Flag persons are often provided in highway and street work zones to stop, slow or guide traffic safely through the area. Flag persons wear orange vests, shirts or jackets and use stop/slow paddles or red flags to direct traffic through work zones.

Flag persons

- Flag persons are used in cases of extreme hazard.
- Flag persons instructions must be obeyed.
- When instructed to stop, do so in your lane - do not veer right or left.
- Do not attempt to go forward until flag person instructs you to do so.
- Proceed with caution - expect the unexpected.
- Always be on the lookout for oncoming vehicles in your lane of traffic.



Two-Lane Rural Roadway – Two-Way Traffic

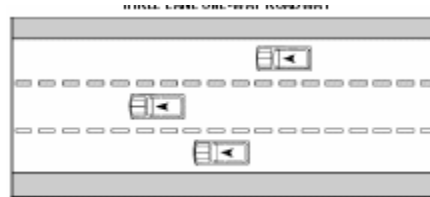
Keep to the right of the yellow centerline. You may cross the broken line when passing another vehicle or when the right half of the roadway is closed to traffic.

DO NOT CROSS THE LINE IF IT IS NOT SAFE TO DO SO.



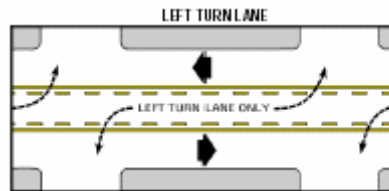
Three-lane One-way Roadway

On a one-way roadway, each lane is marked with a broken white line, you may drive in either lane. When turning from a one-way road be sure to move into the proper lane well in advance of your turn.



Left Turn Lane

The only time a vehicle should enter the center lane is at a point where the vehicle will have time to slow down or stop in order to make a safe left turn maneuver. The center lane should never be used for passing or as a through traffic lane.



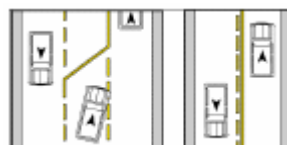
Double yellow line

Do not cross the double yellow line to pass. Stay in your lane as much as possible. If you are driving slower, keep in the right-hand lane.



Solid and Broken Line

A solid yellow line on your side of the road marks a “no-passing zone.”



Crosswalks

White crosswalk lines are painted across a road to indicate pedestrian crossing areas. Pedestrians should use these areas when crossing the road. At intersections where stop lines are missing, you must stop before the crosswalk when required to stop by traffic signs or signals or pedestrians.



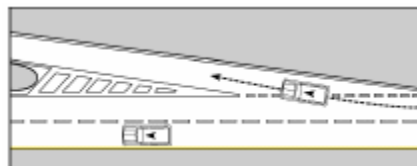
Stop Lines

White stop lines are painted across pavement lanes at traffic signs or signals. Where these lines are present, you should stop behind the stop line.



Solid White Lines

Solid white lines are used for pavement edge lines, shoulder markings, channelizing, transitions and lane use control. Crossing a solid white line should be avoided if possible. The solid yellow line on the left edge of the roadway is a guide to drivers that driving to the left of the yellow line is prohibited because the line is marking the left edge of the roadway. This type of yellow line can be found on interstate highways.



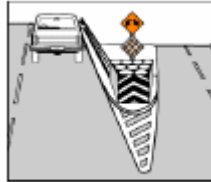
Double Solid White Lines

Crossing is prohibited where there is a pavement marking of double solid white lines.



Barrels

A new concept in reducing the seriousness of accidents. The barrels are engineered to act as an impact cushion. Usually installed in front of a solid obstacle and at an area of high accident frequency.



Signaling

A good driver always lets others know if he is going to turn or stop. Your signal helps others plan ahead. A surprise move often results in accidents. Be alert—watch and give signals.

Signal continuously for at least 100 feet before you turn or stop. **Be sure to turn off your signal light after you use it. Your unintended signal still means “turn” to the other drivers.**

ALWAYS SIGNAL when you are going to:

1. Change lanes.
2. Make a turn.
3. Pull away from a parking space that is parallel to the curb.
4. Slow down or stop.



Module 1 – Lesson 4 Controlling Traffic Flow

The following information is a review of the lesson you just completed. Take time to review and study this information. Remember, this important information will be needed to pass your upcoming assessment, so take the necessary time in order to feel secure about your knowledge of this segment. This is not a graded portion of the course, but should be completed as an additional exercise.

Topic 1 - Basic Safety Rules When Passing Left or Right

- It is not always safe to pass.
- You should be patient and wait until the time is right. Accidents resulting from improper passing can be deadly.
- Make certain that the way is clear.
- Give the proper signal before changing lanes.
- Tap your horn when necessary to avoid surprising the driver ahead.
- Avoid cutting in too quickly if you must return to your original lane.

Keep to the Right

NEVER drive on the left half of the road in the following instances:

- When pavement markings prohibit driving on the left (a “No Passing Zone”).
- When there are two or more traffic lanes in each direction.
- When within 100 feet (about five car lengths) of or crossing an intersection or railroad crossing.
- When on a hill, curve, or any other place where vision is limited.
- When within 100 feet of a bridge, viaduct, or tunnel.

You should always keep to the right half of the road EXCEPT:

- When passing another vehicle on a two or three-lane street.
- When driving on a one-way street.
- When the right half of the road is blocked.

Passing on the Right

- In Texas and many other states, you may pass on the right.
- You may pass on the right only under conditions permitting such movement without conflict.
- The road is clear of parked vehicles or other things and is wide enough for two or more lanes in each direction.
- You are on a one-way road.
- You may pass on a paved shoulder when the vehicle you are passing is slowing or stopped on the main traveled portion of the highway, disabled, or preparing to make a left turn.
- Do not pass on the right by driving off the paved portion of the highway.

When You are Passed

- Do not increase your speed.
- Keep in your lane.
- When being passed on the left, and lanes are not marked, move to the right as far as you safely can. Make it as safe and easy as you can for the other driver to pass you.

How to Pass on a Two-lane Road

- Stay well back from car ahead so you can see ahead.
- Check rearview and side mirrors, also turn your head and look back—someone may be passing you.
- Signal left.
- Check well ahead for “No Passing Zone” and oncoming cars.
- Be sure you have time and space enough to overtake the car ahead and return to the right lane before an approaching car comes within 200 feet of you.
- Tap your horn when necessary to alert the driver ahead.
- Pass on the left and do not return to the right lane until safely clear of overtaken vehicle.
- Wait until you can see the car you have just passed in your rearview mirror before returning to right lane.
- Signal right turn to return to right lane. Be sure to turn your signal off.

Blind-spot Driving

- Don't drive in another driver's “blind-spot.”
- Either pass the other driver or drop back.
- When you pass a car, get through the blind spot as quickly as you can.
- Approach cautiously, but once you are alongside, speed up and get by quickly.

Topic 2 – Turning

Turns

Turning a corner appears to be a simple operation. However, much confusion in traffic and many accidents are caused by drivers who do not turn correctly.

There are 7 steps in making a good turn:

1. Make up your mind before you get to the turning point. Never make a “last minute” turn -- it is too dangerous.

2. Look behind and to both sides to see where other vehicles may be before you change lanes.
3. Move into the proper lane as soon as possible. The faster the traffic is moving, the sooner you should move into the proper lane. If you cannot get into the proper lane at least within one-half block before you turn, you should not turn but continue straight ahead.
4. Give the proper turn signal at least 100 feet before you make your turn. If using a hand signal, hold it until you are close enough to the intersection for others to know what you intend to do. Do not hold the signal while making the turn -- you need both hands on the wheel.
5. Slow down to a reasonable turning speed. Do not use the brake or clutch while actually turning.
6. Make the turn correctly. This will be easy if you are in the proper lane and proceeding slowly enough at the time you begin to turn.
7. Finish the turn in the proper lane.

How To Make a Right Turn

- Well ahead of the turning point, signal for a lane change and when it is safe, move your vehicle to the far right lane.
- Begin right turn signal, and start slowing down at least 100 feet from the corner.
- Look both ways before starting to turn.
- Keep as close as possible to the right edge of the road. Turn using both hands on the wheel.

How To Make a Left Turn

- Well ahead of the turning point, signal for a lane change and when it is safe, move close to the center lane.
- Begin left turn signal and start slowing down at least 100 feet from the corner.
- Look in all directions carefully before starting to turn. Stay to the right of the centerline as you enter the intersection. Yield the right-of-way to any vehicle approaching from the opposite direction.
- Complete the turn to the right of the centerline of the road into which you are turning by entering the lane in which you will interfere the least with other traffic.

Other Turning Procedures

In addition to the turns illustrated watch for pavement markings and signs:

- Which permit turning right or left from or into two or more traffic lanes.
- Which give other special turning or lane information.
- Left From One-Way Into Two-Way Street
 - If you are turning left from a one-way street, turn from the left lane.
- Left From Two-Way Into One-Way Street
 - If you are turning left into a one-way street, enter that street in the left lane.

Topic 3 - Stopping, Standing, or Parking

Not all accidents happen while vehicles are being driven. An improperly parked vehicle may also cause an accident.

When you leave your vehicle:

- Set the parking brake
- Stop the motor
- Remove the key
- Check over your shoulder for any oncoming traffic before opening your car door.

Do Not Park, Stop, or Stand a Vehicle

- On the roadway side of any vehicle stopped or parked at the edge or curb of a street
- On a sidewalk
- Within an intersection
- On a crosswalk
- Between a safety zone and adjacent curb or within 30 feet of a place on the curb immediately opposite the end of a safety zone
- Alongside or opposite any street excavation or obstruction when stopping, standing, or parking would obstruct traffic
- Upon a bridge or other elevated structure upon a highway or within a highway tunnel
- On any railroad track
- At any place where an official sign prohibits stopping

Whether occupied or not: (Temporarily stopping to comply with signs, signals, etc., is not considered parking or standing.)

- In front of a public or private driveway.
- Within 15 feet of a fire hydrant.
- Within 20 feet of a crosswalk at an intersection.

- Within 30 feet upon the approach to any flashing signal, stop sign, yield sign, or other traffic control signal located at the side of a roadway.
- Within 20 feet of the driveway entrance to any fire station and on the side of a street opposite the entrance to any fire station within 75 feet of said entrance.
- DO NOT PARK A VEHICLE (whether occupied or not) within 50 feet of the nearest rail of a railroad crossing.

Parking, Stopping, or Standing on a Highway Out-side an Urban Area

- Never park or leave your vehicle standing on the paved part of any highway outside of a business or residential district when you can park off the roadway. If you cannot park off the road:
- Leave plenty of room for others to pass.
- Be sure that your vehicle can be seen for at least 200 feet from each direction.
- If at night, use your parking lights or leave your headlights on dim.

Disabled Parking

State law provides that it is a violation:

- For a person to park, stand, or stop a vehicle in a disabled person parking space.

The law specifically states:

- You may not park in a disabled parking space unless the vehicle has a disabled license plate or state issued removable windshield identification card.
- You may not use a disabled parking windshield identification card unless transporting the disabled person to whom it was issued.
- You may not lend your windshield identification card to someone else.
- You may not block an access or curb ramp.
- Do not park in striped areas adjacent to handicap parking spaces or in striped area in front of entrance to a business adjacent to a disabled parking space. Striped area is for wheelchair lift.

Additionally, certain municipalities also prohibit stopping or standing in a disabled parking space unless bearing a disabled parking windshield identification card or disabled license plate.

Unattended Motor Vehicle

It is unlawful for any person in charge of a motor vehicle to permit it to stand unattended without first:

- Stopping the engine
- Locking the ignition
- Removing the key from the ignition
- Effectively setting the brake, and when standing on any grade, without turning the front wheels to the curb or side of the roadway.

Parallel Parking

- Choose a space large enough for your car. Signal, stop even with front car about two feet out from it.
- Make sure you will not interfere with oncoming traffic, then turn your front wheels all the way to the right and back slowly toward the curb.
- When your front seat is opposite the rear bumper of the car ahead, quickly turn your steering wheel all the way to the left. Back slowly to the car behind without touching it. You should be about six inches from the curb. Do not park more than 18 inches from the curb or edge of roadway.
- Straighten your front wheels and pull into the final parking position. Center car in space.

SPECIAL NOTE: *On a roadway allowing two-way traffic, the driver must park with the vehicle's right-hand wheels within 18 inches of the **right-hand** curb or edge of roadway.*

Topic 4 – Speed / Speed Limits

Speed

Generally you should:

- Drive at the same speed as the main stream of traffic.
- You should always be aware of how fast you are traveling.
- You must obey speed limits, but a good driver does even more.

Distance and Speed

A Good Driver -- always keeps a safe distance from the car in front of him.

- The faster you go the greater the distance you should keep from the car ahead of you. A good rule is to stay at least two (2-4) seconds behind the vehicle ahead. Example: When the vehicle ahead of you passes a fixed object and you reach this same fixed object in less than two (4) seconds, you are following too close.

A Good Driver -- knows when he should slow down.

- Slow down when the road is wet (rain, snow, sleet). Many drivers find out too late what a little rain can do. Roads become slippery when wet, making your car harder to control. The only wise thing to do is slow down. Make sure you have complete control of the situation at all times.
- Slow down when road is crowded.
- Slow down when your vision is limited. You should always be able to stop within the distance that you can see ahead of your car. In darkness or bad weather, do not over-drive your range of vision.

A Good Driver -- always adjusts his speed according to his own physical condition and the condition of his vehicle.

- If you are tired or not feeling well—don't drive.
- Never force yourself to drive.

Speed Limits

- All drivers are required to obey posted maximum and minimum speed limits. These limits are designed to provide for the orderly flow of traffic under normal driving conditions.
- During periods of heavy traffic, inclement weather, low visibility, or other poor driving conditions, speed must be adjusted so that accidents will be avoided.
- The following chart shows the maximum speed limits for all vehicles under different conditions.

Speed Limits

	Daytime (MPH)	Nighttime (MPH)
URBAN DISTRICT	35	35
ALLEY	15	15
RESIDENTIAL AREAS	25	25
HIGHWAY NUMBERED BY THIS STATE OR THE UNITED STATES OUTSIDE AN URBAN DISTRICT	65	65
FARM TO MARKET AND RANCH TO MARKET ROADS	55	55

**HIGHWAY NOT NUMBERED BY THIS
STATE OR THE
UNITED STATES AND OUTSIDE AN URBAN
DISTRICT**

Passenger cars, motorcycles, light truck, passenger
car or light truck towing a trailer or semi trailer,
truck

or truck-tractor, truck or truck-tractor towing a
trailer

or semi trailer, buses, school activity bus

60 55

School buses that have not passed a commercial
vehicle inspection or are traveling on a highway not
numbered by the United States or this state.

50 50

- Drivers must be aware that cities and counties have the authority to change these limits.

Topic 5 - Headlights

When driving at night slow down. Be sure you can stop within the distance lighted by your headlights.

You should lower (dim) your headlights when you are:

- Within 500 feet of an approaching vehicle.
- When following closely (within 300 feet) behind another vehicle.
- When driving on lighted roads.
- When driving in fog, heavy rain, sleet, snow, or dust.
- If you must park on an unlighted highway at night, leave your parking lights or lower beam headlights on.
- You must use your headlights between one-half hour after sunset to one-half hour before sunrise, or any other time when persons or vehicles cannot be seen clearly for at least 1,000 feet.
- Avoid looking directly into the headlights of approaching vehicles. You should shift your eyes down to the lower right side of your traffic lane.
- Turn signals flashing on one side only should not be used on parked or disabled vehicles.

Topic 6 – Freeway Driving Concerns

Entering the Freeway

- You must yield the right-of-way to vehicles already on the freeway.
- Enter the speed change lane, stay to the right, signal left, and when the way is clear increase your speed so you can merge with the flow of traffic.

Choosing the Proper Lane

- Look twice before changing speed or lanes and always signal.
- Use right-hand lane:
 - If you wish to drive at the minimum speed limit or below the normal flow of traffic.
- Using the middle or left-hand lane:

- If you are traveling faster than other traffic.
- If you plan to leave the freeway soon, change to the exit lane as soon as possible.

Choosing the Proper Lane

Stay in the middle of your lane.

- Stay in your lane—do not weave in and out of traffic.
- Maintain a constant speed. Keep pace with the traffic. Do not speed up and slow down unnecessarily.
- Stay at least 2 seconds behind the vehicle ahead of you.
- In bad weather increase the time to at least 4 seconds.
- Watch the cars ahead of you.
- Be ready if one of them should stop suddenly.
- Adjust your speed to allow others to enter the freeway safely.
- Good driving practices indicate that vehicles in any lane, except the right lane used for slower traffic, should be prepared to move to another lane to allow faster traffic to pass.

Leaving the Freeway

- Move into the proper lane well in advance of the exit. The greater the traffic the earlier you should move into the proper lane. Exit signs are usually placed at least 1000 yards ahead of the exit turn-off.
- Slow down on the speed change lane or exit ramp. While exiting slow down even more, so that by the time you are off the freeway you are going within the slower speed limit. Watch your speedometer until you become use to the slower speed.

Fight Freeway Hypnosis

Freeway Hypnosis is a condition of drowsiness or unawareness can be brought about by reduced activity and steady sounds of wind, engine, and tire hum.

All drivers should be aware of its danger and of the methods for fighting it.

- STOP OFTEN. Even if you are feeling well you should stop at least every two hours or every 100 miles. Get out of your car and walk around. Allow your muscles to relax.
- DO NOT DRIVE MORE THAN EIGHT HOURS PER DAY.
- KEEP SHIFTING YOUR EYES. Look at different objects—near and far, left and right. Read the road signs as you approach them. Check your rearview mirror.

Vehicle Breakdown

- If you can't get the car off the pavement, get everyone out of the car and off the road.
- Portable warning devices should be used to warn oncoming traffic.
- Move your car off the pavement to the side of the road. A car with a flat or blowout can be driven slowly off the road.
- Turn on your emergency warning lights. If you do not have warning lights, use your taillights. At night besides your taillights, turn your inside lights on.
- Tie a white cloth to your radio antenna, door handle, or some other place where it may be easily seen. If you do not have a white cloth, raise your hood.

Topic 7 – Problem Situations

Steering Out of a Skid

Steering out of a skid—An automobile skids when its tires lose their grip on the road surface. If your car starts to skid:

- DON'T JAM ON THE BRAKES.
- Take your foot off the gas pedal (accelerator).

- TURN YOUR STEERING WHEEL IN THE DIRECTION OF THE SKID.
- As you recover control, gently straighten the wheels.
- You can avoid a skid if you slow down when road and weather conditions are poor.
- Also check your tires—poor tires are dangerous.

Brake Failure

When brakes fail don't panic.

- Remember your parking brake and shift to a lower gear.
- Apply your parking brake cautiously so that you do not lock the brakes and throw your car into a skid.

If You Run Off Pavement

If you run off the pavement:

- Don't hit the brakes suddenly and hard.
- Grip the steering wheel tightly and take your foot off the gas pedal.
- Use your brakes carefully and don't try to swing back onto the pavement.
- Wait until your speed is reduced, check traffic behind you, then carefully drive back onto the pavement.

Flat Tire or Blowout

- Check the air pressure in your tires frequently.
- Check the pressure when the tires are cool.

If you should have a flat or blowout:

- Do not “slam” on the brakes.
- Take your foot off the gas and gently apply the brakes.
- Steer straight ahead to a stop.

Driving Down Steep Grade

- Use a low gear to help slow your vehicle down.
- Never coast in neutral or with your foot on the clutch.

Get the Feel of the Road

- Start out very slowly. It is both futile and foolish to burn the rubber off your tires by spinning the wheels.
- Test your brakes gently after the car is in motion to determine how much traction you will have.
- Start slowing down before you come to a turn.

Topic 8 – Winter Driving Concerns

Winter Driving

Equip your vehicle with chains or snow tires

Chains are by far the most effective, and they should be used where ice and snow remain on the roadway. One word of caution...neither chains nor snow tires will permit you to drive on slick pavement at normal speeds, so don't let yourself get a false feeling of security

Maintain a safe interval

You must increase the distance from the vehicle ahead of you according to the conditions of the pavement. Many needless rear-end collisions occur on icy streets because drivers forget to leave stopping space. Snow tires will slide on ice or packed snow. To keep safe you must keep your distance.

Reduce speed to correspond with conditions.

There is no such thing as a "safe" speed range at which you may drive on snow or ice. You must be extremely cautious until you are able to determine how much traction you can expect from your tires. Avoid locking of brakes on glazed ice as it will cause a loss of steering and control. Every city block and every mile of highway may be different, depending upon sun or shade and the surface of the roadway.

Keep windows clear.

Remove snow and ice before you drive, even if you're just going to the corner drugstore. Make certain the windshield wipers and defroster are working properly.

Watch for danger spots ahead.

There may be ice on bridges when the rest of the pavement is clear. Snow melts more slowly in shady areas. Take precautions when approaching turns.

Get the feel of the roadway.

Start out very slowly. It is both futile and foolish to burn the rubber off your tires by spinning the wheels. Test your brakes gently after the car is in motion to determine how much traction you will have. Start slowing down before you come to a turn.



Module 1 – Lesson 6

Cooperating with Other Roadway Users

The following information is a review of the lesson you just completed. Take time to review and study this information. Remember, this important information will be needed to pass your upcoming assessment, so take the necessary time in order to feel secure about your knowledge of this segment. This is not a graded portion of the course, but should be completed as an additional exercise.

WHAT TO DO IF YOU ARE INVOLVED IN AN ACCIDENT

Stop at once (if you are blocking traffic, move your car out of the way if possible).

Arrange at once to warn other traffic—to prevent other crashes.

Help anyone who may be hurt.

Notify the nearest police station, sheriffs' office, or state trooper immediately if anyone is injured or killed or there is damage to any vehicle to the extent that it cannot be normally and safely driven.

Give your name, address, vehicle registration number, driver's license number and insurance information to anyone who was involved in the accident. Get the same information from the other driver. Record the insurance company name and the policy number exactly as shown on the driver's proof-of-insurance card. Similar company names can cause confusion.

If there is an injury, death, or \$500.00 property damage to any one person, you must make a written report to the Department of Public Safety; however, if the accident was investigated by a law enforcement officer, the officer's report will fulfill this reporting requirement.

If you damage an unattended vehicle, you must either locate the owner or leave your name, address, the name of the owner of the vehicle you were driving, and a statement of what happened on the damaged vehicle where the owner will find it.

If you damage property you must make a reasonable effort to locate the owner to give him all the necessary information.

When an accident occurs on a main lane, ramp, shoulder, median, or adjacent area of a freeway in a metropolitan area and the vehicles can be safely driven, each driver shall move his vehicle from the accident area to a designated accident investigation site, if available, or other suitable location to minimize interference with freeway traffic.

If you are involved in a hit-and-run accident, report this to a law enforcement agency for investigation. In most cases, your uninsured motorist coverage will pay for your damage in hit-and-run accidents only if the accident is reported to the police.

AIDING THE INJURED

When calling a doctor or ambulance, (4) state the place of the accident clearly and correctly.

Do not assume that a person is not injured simply because he says he is not. Send for skilled help as quickly as possible. Unskilled handling can do more harm than good.

Do not move or lift the victim unless it is absolutely necessary. If he must be moved get help and try not to change the position in which he was found.

Stop serious bleeding with thick cloth pads, as clean as possible, applied with pressure by hand or by bandaging.

Keep the victim warm. Cover him with blankets or coats if necessary.

THE PEDESTRIAN (person on foot)

Laws and Other Safety Tips For Pedestrians

- Obey all traffic and pedestrian control signals
- Do not cross the street between two intersections. It is dangerous to cross in the middle of the block
- Use sidewalks when available, and do not walk in the street.
- Walk on the left side of the road if there are no sidewalks. Step off the pavement when a car approaches.
- If you cross a street at any point other than within a crosswalk at an intersection, you (the pedestrian) must yield the right-of-way to all vehicles.
- If you cross a street without using a pedestrian tunnel or overhead pedestrian crossing which has been provided, you the pedestrian must yield the right-of-way to all vehicles.
- When crossing at a crosswalk, keep right.
- Blind, partially blind, or disabled persons may carry a white cane while walking. Others must not display such a cane on any public street or highway.
- No person may stand in the roadway for the purpose of soliciting a ride, contributions, or business.
- Do not suddenly walk or run into the street. They may make it impossible for an oncoming driver to yield.
- Wait on the curb, not in the street, until the traffic signals change to green or read "Walk."
- Always wear white or light colored clothing, or carry a light or reflector when walking at night.
- Look both ways before crossing the street and before stepping from behind parked cars.
- Be extra careful when getting off a streetcar or bus.
- Get in and out of cars on the curb side of the road.
- Do not walk on a roadway when drinking. Many drinking pedestrians become traffic victims.
- Watch for blind or handicapped persons crossing the street. Texas law states: "The driver of a vehicle approaching an intersection or crosswalk where a pedestrian guided by a guide dog or carrying a white cane is crossing or attempting to cross shall take necessary precautions to avoid injuring or endangering the pedestrian. The driver shall bring the vehicle to a full stop if

injury or danger can be avoided only by that action.” Remember, the white cane indicates the person may be blind, partially blind, or disabled. Others must not display such a cane on any public street or highway. If you see a blind person, slow down, use your horn if necessary, and be prepared to stop. Watch especially for blind persons at bus stops, intersections, business areas, and near schools for the blind.

- Pedestrians should be aware that local authority cities, counties may have ordinances that require pedestrians to comply strictly with the directions of an official traffic control (signals, signs, etc.) and prohibit pedestrians from crossing a roadway in a business district or a designated highway except in a **crosswalk**.

BICYCLE RULES FOR MOTORISTS

A bicycle is a vehicle and any person riding a bicycle has all of the rights and responsibilities as a driver of a vehicle.

Bicyclists are required to ride as far right in the lane as possible only when the lane can be safely shared by a car and a bicycle, side by side.

Bicyclists are not restricted to the right lane of traffic. One-way, multiple lane streets are one example. Another instance is when the bicyclist is changing lanes to make a left turn.

The bicyclist should follow the same path any other vehicle would take traveling the same direction.

Motorists should merge with bicycle traffic when preparing for a right-hand turn.

Avoid turning directly across the path of bicycle traffic.

BICYCLE SAFETY GUIDELINES

Although not required by law, it is highly suggested that bicycle riders wear an approved bicycle helmet.

When riding on pedestrian facilities, reduce speed and exercise caution.

Do not weave in and out of parked cars.

Move off the street to stop, park, or make repairs to your bicycle.

A bicyclist should select a route according to the person's own bicycling skill and experience.

It is not required by law, but bicycles should be equipped with a mirror.

WET WEATHER RIDING

During wet weather riding, visibility of motorists is greatly decreased.

Wear highly visible clothing when riding on a bicycle.

Water makes certain surfaces slick.

Be aware of manhole covers and painted stripes on the road.

Water obscures some hazards. Watch for potholes filled with water.

COMMON MOTORIST MISTAKES THAT BICYCLE RIDERS SHOULD KNOW

The most common motorist caused car-bicycle collision is a motorist turning left in the face of oncoming bicycle traffic. Oncoming bicycle traffic is often overlooked or its speed misjudged.

The second most common motorist caused car-bicycle collision is a motorist turning right across the path of the bicycle traffic. The motorist should slow and merge with the bicycle traffic for a safe right-hand turn.

The third most common motorist caused car-bicycle collision is a motorist pulling away from a stop sign, failing to yield right-of-way to bicycle cross traffic. At intersections, right-of-way rules apply equally to motor vehicles and bicycles.

SHARING THE ROAD WITH A TRUCK

Whether you're sharing the road with an automobile, motorcycle, truck, bus, or other large vehicle, it's important for safety's sake to obey traffic laws, abide by the rules of the road, and drive defensively.

PASSING

When passing a truck, first check to your front and rear, and move into the passing lane only if it is clear and you are in a legal passing zone.

Let the truck driver know you are passing by blinking your headlights, especially at night. The driver will make it easier for you by staying to the far side of the lane.

When you meet a truck coming from the opposite direction, keep as far as possible to the side to avoid a sideswipe accident and to reduce the wind turbulence between the two vehicles. Remember that the turbulence pushes the vehicles apart. It does not suck them together.

FOLLOWING A TRUCK

Tractor-trailers take longer to stop than a car traveling at the same speed.

The average passenger car traveling at 55 m.p.h. can stop in approximately 240 feet, which is about three-fourth's the length of a football field.

If you're following a truck, stay out of its "blind spot" to the rear.

Avoid following too closely, and position your vehicle so the truck driver can see your vehicle in the truck's rearview mirror.

When you follow a truck at night, always dim your headlights.

If you are stopped behind a truck on a upgrade, leave space in case the truck drifts slightly back when it starts to move.

RIGHT TURNS

Pay close attention to truck turn signals. Trucks make wide right turns and sometimes must leave an open space to the right just before the turn.

BACKING CRASHES

Never try to cross behind a truck which is preparing to back up. Often, when a truck driver is preparing to back the truck from a roadway into a loading area, there is no choice but to temporarily block the roadway.

MANEUVERABILITY

Trucks are designed to carry many products to and from towns and cities; they are not designed to be as maneuverable as cars. Trucks have longer stopping and accelerating distances, a wider turning radius, and weight more.

SHARING THE ROAD WITH A MOTORCYCLE

Almost two-thirds of these motorcycle accidents are caused, not by the motorcyclist, but by the driver. The driver either does not see the oncoming motorcyclist at all or does not see the motorcyclist in time to avoid an accident.

WHY DON'T DRIVERS SEE MOTORCYCLIST?

There are several reasons why drivers may not see the motorcyclist coming:

Motorists tend to look for other cars, not for motorcyclists.

The profile of a motorcycle is much smaller than the profile of larger vehicles.

Motorcycle riding requires frequent lane movements to adjust to changing road conditions.

Accidents are most likely to occur in these high-risk situations:

- *Left Turns.* The most common accident between cars and motorcyclists is at an intersection when the automobile driver is making a left turn in front of a motorcycle.
- *Car's Blind Spot.* Cyclists riding alongside a lane of cars are often out of the view of the driver. An unsuspecting driver may collide with a motorcyclist as the driver tries to change lanes.
- *Hazardous Road Conditions.* Motorcyclists have to be much more concerned about road obstructions such as potholes and fallen tree limbs. Railroad tracks may be minor problems for drivers, but a motorcyclist may have to slow down or change lanes to avoid these obstacles.
- *Weather Conditions.* When the road surface is wet or icy, motorcyclists' braking and handling abilities are impaired.
- *Strong Winds.* A strong gust of wind can move a motorcycle across an entire lane if the rider isn't prepared for it. Wind gusts from large trucks in the other lane can be a real hazard.
- *Large Vehicles.* A large vehicle such as a van, bus, or truck can block a motorcycle from a driver's view.

DEFENSIVE DRIVING

To avoid accidents, the defensive driver should:

- Stay alert and keep his eyes moving so that he can keep track of what is happening at all times. Look for trouble spots developing all around him.
- Have a plan of action if the other driver does the wrong thing.
- Know that the law requires drivers to protect each other from their own mistakes.

WHEN STOPPED BY POLICE

Move the vehicle safely to the right edge of the road or street as soon as possible and stop.

Place the vehicle's gear selector in a parking position, set the emergency brake, turn the engine off, and activate the hazard warning lights.

Remain in the vehicle, lower the driver's window and **WAIT FOR THE OFFICER TO ISSUE FURTHER INSTRUCTIONS. FOLLOW THE INSTRUCTIONS OF THE OFFICER.**

Require all occupants to remain in the vehicle unless other instructions are given by the officer.

Give the appropriate signals and safely return to the proper lane of traffic when released by the officer.

KEYS TO SAFE DRIVING

Good vision - look with your eyes but see with your mind.

Obeying traffic laws

Proper care of your car - don't depend on yearly inspections.

Courtesy - safety comes before right-of-way.

Proper signaling - failure to signal is dangerous and inconsiderate.

Physical fitness - Let someone else take the wheel if you are not physically and mentally alert.

TRANSPORTING CARGO AND MATERIAL

State law requires that drivers comply with certain requirements in order to prevent cargo or loose materials from falling or spilling from a vehicle (car, truck, trailer, etc.) onto the roadway and possibly causing accidents or damage to the roads.

State law mandates that no person shall load or transport any loose material on or over the public highways, such as dirt, sand, gravel, wood chips, or other material (except agricultural products in their natural state), that is capable of blowing or spilling from a vehicle.

SAFETY CHAINS

Safety chains are required when certain types of vehicles are towing trailers in order to prevent the trailer from breaking loose and causing a serious accident.

State law mandates that a person may not operate a passenger car or light truck while towing a trailer, semi-trailer, or house trailer on a public highway unless safety chains of a type approved by the Texas Department of Safety are attached in a manner approved by the Department.

TOWING

When one vehicle is towing another, the drawbar, chain, rope, cable, or other connection must not be longer than fifteen (15) feet from one vehicle to another. (This 15 foot limit does not apply to pole trailers.)

When a chain, rope, or cable is used as a connection, a white flag not less than twelve inches square must be attached to it.

CARBON MONOXIDE

Beware of carbon monoxide poisoning.

Cars produce carbon monoxide which is a deadly gas.

Make sure that you are getting plenty of fresh air.

ROAD RAGE

Each year road rage or aggressive driving causes hundreds of deaths and injuries to drivers across the United States. Aggressive driving occurs when a driver becomes angry or irritated and, consequently, fails to follow the rules of the road. An aggressive driver will intentionally aggravate or attempt to aggravate other drivers and in some cases will even cause bodily injury, property damage, or death to other drivers or individuals.

Listed below are some tips on avoiding road rage.

- Plan your trip or schedule in advance and allow extra time in case your vehicle breaks down or in case of traffic congestion due to an accident, road construction, or rush-hour traffic.
- When caught in traffic do not get angry. Try to relax, listen to music you enjoy, take into consideration that some traffic congestion in some cases is temporary and you will soon be on your way.
- Should you need to use the horn, tap the horn - do not blow the horn.
- Do not confront other drivers or make obscene gestures.
- Do not cut into another driver's lane of traffic, properly signal your intentions to change lanes and change lanes when safe to do so. Ensure you turn your turn signal off after you complete your lane change.
- Do not intentionally slow down or slam on your brakes or speed up to keep someone from passing or from entering your lane of travel.
- Do not tailgate - follow at a safe distance.
- Always remember to drive friendly and report aggressive driving to the local authorities.

FIELD OF VISION

Remember speed reduces field of vision:

- STATIONARY - Field of vision 180° or more
- 20 M.P.H. - Field reduced to approximately $\frac{2}{3}$
- 40 M.P.H. - Field reduced to approximately $\frac{2}{5}$
- 60 M.P.H. - Field reduced to approximately $\frac{1}{5}$